

USB Monitor

Manual Operation



Dear Users:

Our company USB monitor only needs USB cable to connect PC, which can be used for image demo, audio play and touch function. Users can use it as an external display and audio monitoring by USB cable, according to USB interface transmission characteristics; it also can be displayed for several users. So it is widely applied for multi-media teaching, television, Telephone, conference, exhibition, finance, research, meteorology, supermarkets, public security system, press play, and monitor expansion areas of broad application prospects.

◆ Safety Instructions

These safety instructions must be followed to ensure your safety and prevent property damage.

Make sure to read the instructions carefully and use the product in the correct manner.

- A.** Do not expose this product to direct sunlight, heat or humid conditions.
- B.** Clean the product using a soft cloth with a monitor cleaner only. Make sure to disconnect USB Cable while cleaning. Ensure that water does not enter the product and that is not wet. Do not use organic solvents to scrub machines, destroy the machine surface.
- C.** LED display is fragile unit. Do not force on LCD Screen. Do not tap or scratch LCD Screen with a sharp object, otherwise, LCD may get damage. Do not put the monitor in a unstable or may fall location, otherwise, may cause personal injury or damage the machine.

- D.** Ensure that users do not disassemble, repair or modify the product by themselves. If the product needs to be repaired, contact a Service Center.

Contents

1. Product Introduction-----	3
2. PC Connecting and power supply support-----	4
3. Driver disk installation-----	5
4. Setting-----	6
5. Touch calibration procedure installation & touch panel calibration -----	8
6. System requirements and restrictions-----	10
7. Parameters-----	11
8. Trouble shooting-----	12

1. Product Introduction

a. Front panel



1 --- Signal input (power) indicator

2 --- Power switch

3 --- Brightness increase button

4 --- Brightness decrease button

5 --- Volume up button

6 --- Volume down button

b. Rear Case Signal Input Port



1 --- A type USB extension port, can be used as a mouse, keyboard, or U disk expansion port

- 2 --- B type mini USB input port, USB signal input
- 3 --- 5V DC power support input

2. PC Connecting and power supply support

USB monitor doesn't require any additional power source except USB. So that need require the USB ports on PC can supply current which is not less than 400mA. Attached Y type USB cable has 3 USB input port, 2 A type and 1 B type mini USB port. 2 A type USB Port connect the PC USB port, B type mini USB port to connect to the port in the monitor.

Attached Y type USB cable:



- 1 — A type USB Port, power and data transmission, connect to the USB port of the PC.
- 2 — A type USB Port, power and data transmission, connect to the USB port of the PC (optional).
- 3 — B type mini USB input port, connect to USB monitor input port.

Please use the two A type USB plug into the PC to the USB port to ensure power supply.

3. Driver disk installation

a. System Requirements:

- CPU: Intel Pentium/Celeron/AMD/K6/Athlon/Duron 1.2GHz or above
- RAM: 512MB RAM or above
- USB: at least one or more USB2.0 port
- HDD: 30MB HDD space above

b. Installing monitor driver:

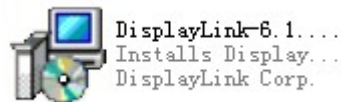
b-1. Insert the CD into the CD-ROM drive

- please make sure that your USB monitor is connected to the PC.
- do not power off or disconnect the USB cable until installation is completely finished. This may damage systems or may cause system errors.

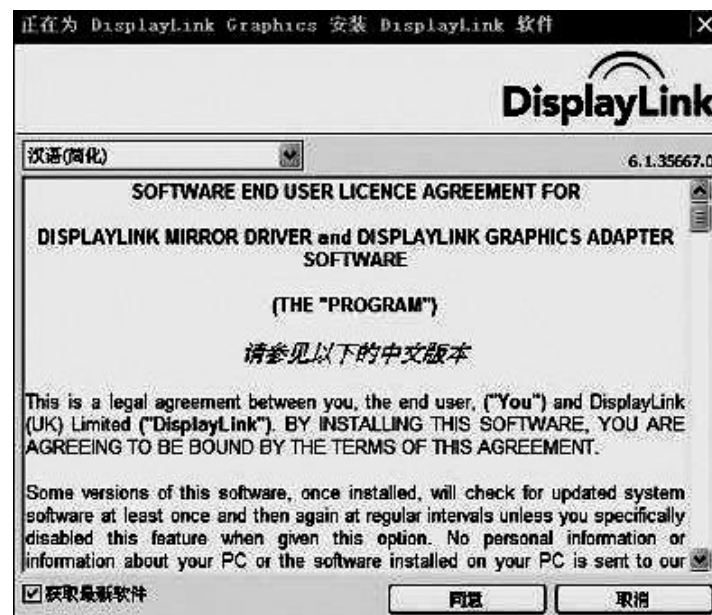
b-2. Open the folder



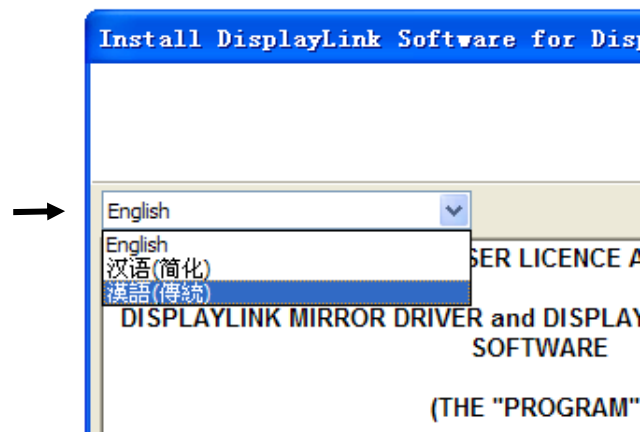
b-3. Double click the icon

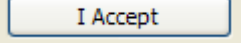



Pop-up as follows:



b-4. Choose installation language



b-5. Click  "agree", the system will automatically install the driver

b-6. When the driver installation is completed, icon  appears on your system tray.



While installing software driver, make sure the USB cable be connected to the computer.

b-7.At this point, your USB monitors can display properly, you can follow the computer prompts, make the appropriate settings for the USB Monitor.

4. Setting

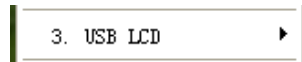
On the lower right corner taskbar  select 

a. Mouse left click 

Pop up menu



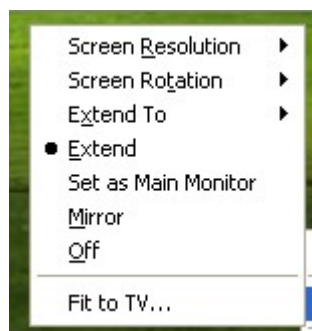
b. Move cursor to



Pop up menu as below



c. Select the parameters display or setting item on the menu, click USB monitor to setting or display the parameters on the USB monitor.



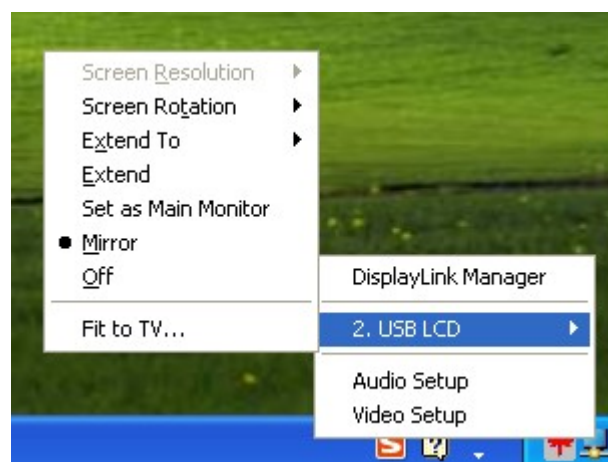
d. Exit the present status, select "close", then repeat the previous setting 1-3 , reselect the new setting.

5. Touch calibration procedure installation & touch panel calibration

If your monitor is without touch function, please ignore this step.

If monitor with touch function, after finished install above driver disk and setting, need to reinstall touch calibration procedure.

- a. Reference above setting instruction, setting USB monitor as the main display

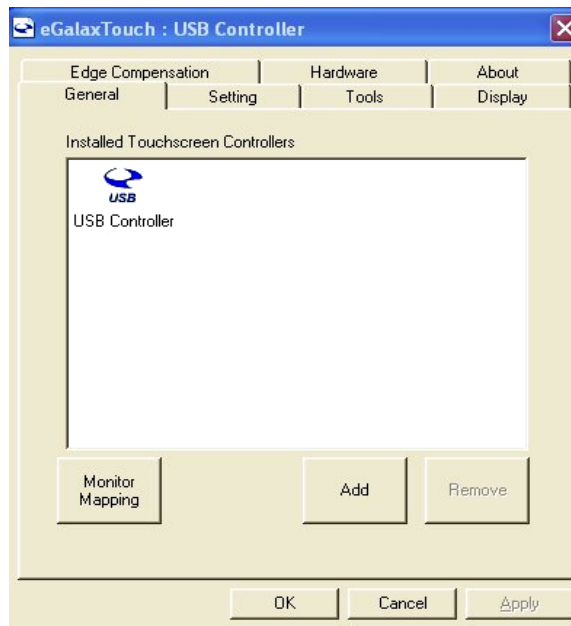


Transfer the main display to USB monitor, you can operate follow to the point of the monitor.

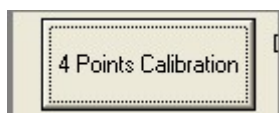
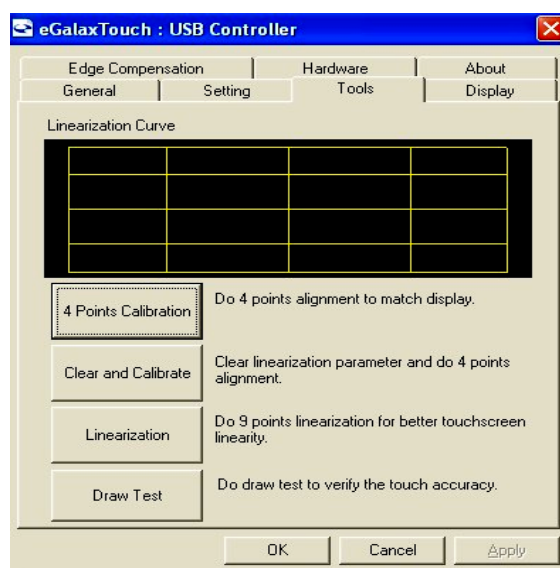
- b. Open attached CD into CD-ROM drive
- c. Click file:

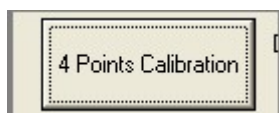


- d. According to the different operation system to select the installation procedure. Then according to the PC point to install procedure.
- e. After installation finished, PC may point to reboot
- f. After reboot, open touch calibration procedure to calibrate.



g. Click "tool" enter into below display menu.



Select,  to calibrate touch panel. You can also use "Linear set" 9:00 calibrate.

h. After calibration completed, system for data readout stored, OK to return to the desktop display. Then you can use the touch function normal.

6. System requirements and restrictions

a. Operating Systems

- Windows XP
 - Service Pack 1 prior: Not supported
 - Service Pack 2 or after: Supported
- Windows 2000
 - Service Pack 3 prior: Not supported
 - Service Pack 4 or after: Supported
- Windows Server 2003: Not supported
- Windows Vista: Supported except 64bit systems
- Windows 7
- Mac OS

User may check the Operating System version by Right-click 'My Computer' → 'Properties' → 'System Properties'

b USB Monitor is a USB monitor to be recognized as a Generic USB device. Therefore system boot-up screen or DOS screen cannot be displayed properly.

c. Any software that requires Hardware 3D accelerator cannot be displayed properly with USB monitor. Check below.

- Real Player(Expansion Mode)
- 3D Graphic Games
- Programs based on Direct X graphic engine

If the PC doesn't support USB2.0, USB Monitor may not operate properly.

d. If the systems' Graphic card doesn't support WDDM(Windows Display Driver Model), the USB monitor's extension mode may not work properly with Windows vista System.

7. Parameters

Panel size	10.1"	
Panel type	IPS LCD	TFT LCD
Resolution	1024x600 pixels	1366x768 pixels
Dot pitch	0.2175(H) x 0.2088(V) mm	0.1629 (H) x 0.1629 (V) mm
Brightness	450cd/m ²	250cd/m ²
Contrast Ratio	800:1	500:1
Viewing Angle	85°/85°(L/R) 85°/85°(U/D)	45°/45°(L/R) 20°/45°(U/D)
Aspect Ratio	16:9	
Input Voltage	DC 5V±10%	
Install way	Foldable Bracket (support 75*75mm VESA Mounting)	
Power Consumption	Current MAX: 1100 mA Power Consumption ≤6W	
Unit Size	255 L×163 W×69 H mm (folding) 255 L×150 W×236 H mm (stretching)	
Unit Weight	1018g	
Touch screen	4 wire resistive touch panel (USB) 5 wire resistive touch panel (optional)	
Backlight	LED	
Audio video input signal	USB2.0	
Working temperature	- 20~50℃	
Storage temperature	- 30~65℃	

8. Trouble shooting

Before calling for assistance, please read carefully below. If you do need assistance, please call local service center or contact your dealer.

a. No image on screen, I cannot turn on the USB Monitor

A: Please check if the USB cable is connected. Please run the "USB installation software" by CD disks. For more detail about driver installation, please refer to **3. Driver disk installation**

b. I cannot turn on my USB Monitor screen on.

A: Please check if the USB cable is connected, and then check screen.

Please check if 'USB Installation Software' has been installed properly.

- a)** Right-click 'My Computer'
- b)** Click 'Device Manager's at 'Hardware' tab
- c)** Locate the cursor on PC at the top of the system tree
- d)** Click "Action (A)" → "Add Hardware (A)"
- e)** Reboot the PC

Normal PC recognizes USB Monitor as a generic USB device. Frequent power on and off of the device may cause USB device error. Please refer to Microsoft customer support for USB devices troubleshooting

c. I cannot boot my system after connecting USB Monitor.

A: In case i851 chipset once – Board Type PC system, please disable 'Legacy USB support' option in system.

BIOS setup method may differ from PC to PC, please refer to the User manual of the PC. Please refer to Microsoft homepage for more detail.

d. I cannot see DOS opening screen with USB Monitor when my PC systems is booting up.

A: USB Monitor is using USB device. Since DOS doesn't recognize USB Device while booting –up. USB Monitor cannot get video signal from the system.

e. I cannot run 3D graphic game with the 7inch UM screen.

A: The 7inch USB is using USB 2.0 interface for video data transfer. Therefore any program that requires 3D high speed graphic acceleration cannot be displayed properly.

Restricted Programs:

- a).** Real Player (Doesn't support Extension Mode)
- b).** 3D Graphic Games
- c).** Programs that requires Direct X graphic acceleration
- d).** Power DVD
- e).** Win DVD (Version 5 or later)
- g).** Windows Media Player (Version 10 or later)
- h).** GOM Player
- I).** KM Player

f. How to uninstall “USB installation software”

A: ‘Control Panel’ → ‘Program Add/Remove’ → ‘Display link Core software’ → Click ‘remove’.

g. How many USB Monitors can be connected to one PC?

A: USB Monitor is a generic USB device. Theoretically a PC can recognize up to 127 USB device. However with the latest PC system, we recommend number of USB monitors and each respective PC system requirements as below.

a). 1~2 USB Monitor connections -1.2GHz CPU/512 MB Memory

b). 3~5 USB Monitor connections -1.8GHz CPU/1GB Memory

c). 6 USB Monitor connections -1.6GHz Dual core CPU/1GB Memory

Display response rates on each USB monitor may vary upon the PC's resource management status.

h. When USB connected with PC first, after PC starts, UM is standby and no display?

A: Plug-out and plug in again with the USB cable between PC and USB Monitor, or please uninstall the Display link software driver, and then re-install the driver.

■ **Remark:**

If there are still other problems, please contact with our related deals. If there are changes without prior notice.