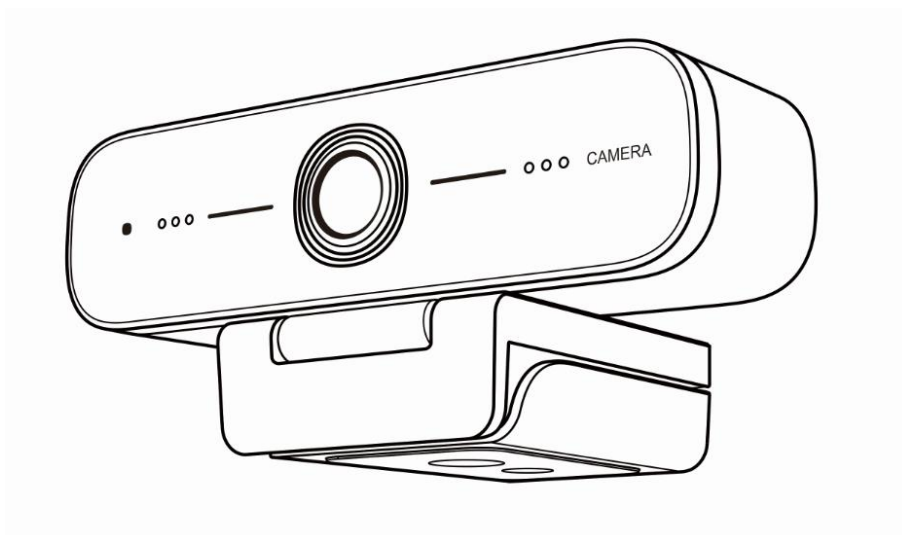


# Desktop HD Video Camera User Manual





# Attentions

---

**This manual introduces functions, installations and operations for this camera in details. Please read this manual carefully before installation and use.**

## **1. Cautions**

- 1.1 Avoid damage to product caused by heavy pressure, strong vibration or immersion during transportation, storage and installation.
- 1.2 Housing of this product is made of organic materials. Do not expose it to any liquid, gas or solids which may corrode the shell.
- 1.3 Do not expose the product to rain or moisture.
- 1.4 To prevent the risk of electric shock, do not open the case. Installation and maintenance should only be carried out by qualified technicians.
- 1.5 Do not use the product beyond the specified temperature, humidity or power supply specifications.
- 1.6 Wipe it with a soft, dry cloth when cleaning the camera lens. Wipe it gently with a mild detergent if needed. Do not use strong or corrosive detergents to avoid scratching the lens and affecting the image.
- 1.7 This product contains no parts which can be maintained by users themselves. Any damage caused by dismantling the product by user without permission is not covered by warranty.

## **2. Electrical Safety**

Installation and use of this product must strictly comply with local electrical safety standards.

## **3. Install**

- 3.1 Do not rotate the camera head violently, otherwise it may cause mechanical failure;
- 3.2 This product should be placed on a stable desktop or other horizontal surface. Do not install the product obliquely, otherwise it may display inclined image.
- 3.3 Ensure there are no obstacles within rotation range of the holder.
- 3.4 Do not power on before completely installation.

## **4. Magnetic Interference**

Electromagnetic fields at specific frequencies may affect the video image. This product is Class A. It may cause radio interference in household application. Appropriate measure is required.

# Content

---

1. Camera Installation .....	3
1.1 Product Interfaces .....	3
1.2 Usage of the Product .....	3
2. Product Introduction .....	4
2.1 Dimension .....	4
2.2 Main Features .....	4
2.3 Technical Parameter .....	5
3. Maintenance and Troubleshooting .....	6
3.1 Camera Maintenance .....	6
3.2 Troubleshooting .....	6

# 1. Camera Installation

## 1.1 Product Interfaces

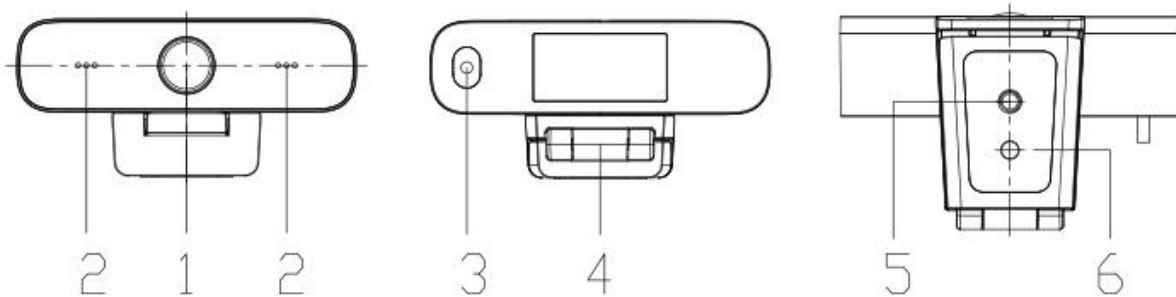


Figure 1.1 Interfaces Instructions

1. Camera Lens(fixed)	3. USB2.0 Cable Outlet Hole(no plug)	5.Screw Hole for Tripod
2. Audio IN(built in pick-up)	4.Fixation Clamp	6.Screw Hole for Bracket

The USB 2.0 port available for plug and play, and it can output video and power the camera.

## 1.2 Usage of the Product

- 1) Product installation: Fix the device on the top of LCD screen or laptop or directly on the desktop and tripod.
- 2) Camera USB cable connect with computer, video conference terminal or other USB input device.
- 3) Open the video software, select the video device to get video output.

## 2. Product Introduction

### 2.1 Dimension

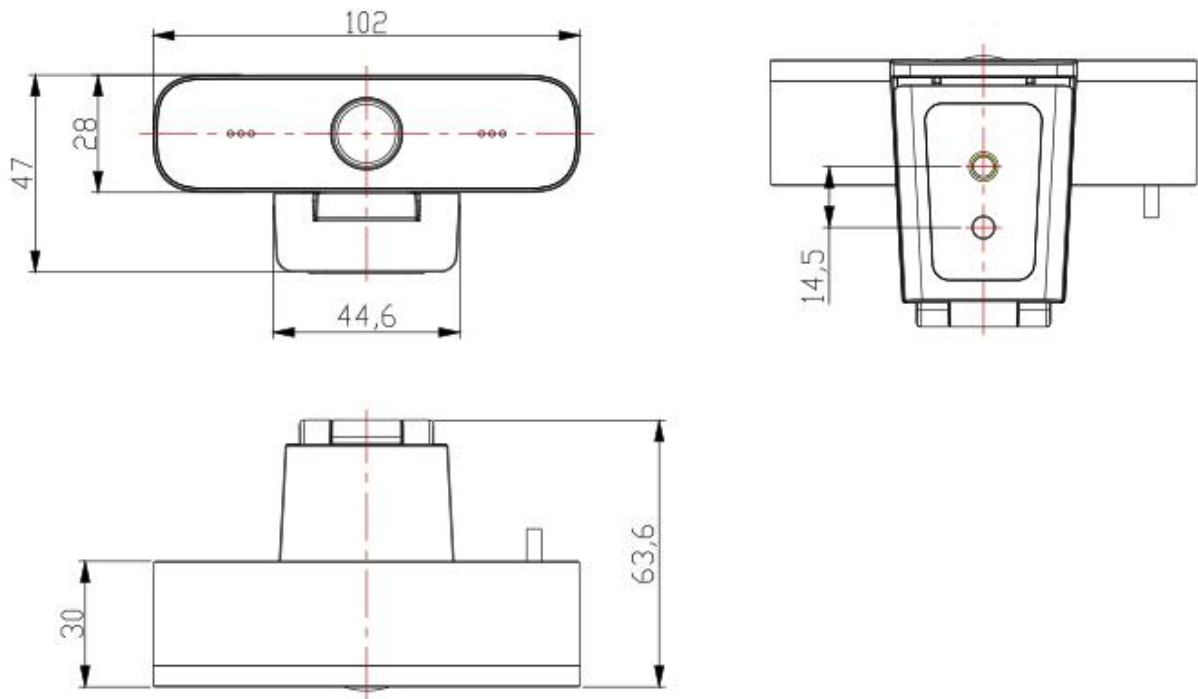


Figure 2.1 Product Dimension

Please check and confirm all accessories are provided when opening the package:

User Manual x 1

Warranty Card x 1

### 2.2 Main Features

The camera offers perfect functions and superior performance; Featuring with advanced ISP processing algorithms, offering vivid and high resolution video with a strong sense of depth and fantastic color rendition. Easy and convenient to install and maintain, stable and reliable.

#### Product Advantages

- FHD: High quality sensor. Resolution is up to 1920x1080 with frame rate up to 30fps.
- Multiple installation: Free to choose installation place, the device is with fix clamp which enable it to be installed on LCD screen, the top of laptop or directly on desk and tripod.
- Wide Application: Personal Video Platform, Videoconferencing, Cooperative Office etc.

- Convenient application: No need to download driver or extra software, it is convenient and easy for users.

### Product Features

- USB2.0 Interface: Easy plug and play, power and upgrade support;
- Distortion-less Lens 85° horizontal viewing angle without distortion lens.
- Stereo sound: built-in pickup, clear and natural stereo sound effect, no need for external pickup equipment;
- Multiple video encoding: support H.264、H.265、MJPEG、YUY2 video encoding, making video playback smoother;

## 2.3 Technical Parameter

Sensor	high quality CMOS sensor
Effective Pixels	2.07MP, 16:9
Video Format	USB Output 1080x1920@30fps/25fps;1920x1080@30fps/25fps; 1600x896@30fps/25fps;720x1280@30fps/25fps;1280x720@30fps/25fps;1024x576@30fps/25fps;960x540@30fps/25fps;800x600@30fps/25fps;800x448@30fps/25fps;720x576@30fps/25fps;720x480@30fps/25fps;640x480@30fps/25fps;640x360@30fps/25fps;480x270@30fps/25fps;320x240@30fps/25fps;352x288@30fps/25fps;320x180@30fps/25fps
View Angle	92° (D) /52° (H) /85° (V)
Focal Length	3.24mm
Digital Zoom	3X
Minimum Illumination	0.5Lux(F1.8, AGC ON)
Focus	Manual
AF	Fixed
Backlight Contrast	On/Off
Exposure	Exposure parameters can be adjusted , support auto exposure
Video Adjustment	Brightness, Definition, Saturation, Contrast, White Balance Mode, Gain, Anti-flicker, Low brightness compensation etc.
SNR	>50dB

Input/output Interface	
Video Interfaces	USB2.0(support power supply and upgrade)
Video Compression Format	MJPEG、YUY2、H.264、H.265
Audio Input	Built in high sensitive voice pickup
USB Audio	Support
USB Communication Protocol	UVC、UAC
PTZ Control	Support EPTZ

Other Parameter	
Input Voltage	5V
Input Current	500mA ( Max. )
Power Consumption	2.5W(Max.)
Stored Temperature	-10°C ~ +60°C
Stored Humidity	20% ~ 95%
Working Temperature	-10°C ~ +50°C
Working Humidity	20% ~ 80%
Dimension(WXHXD)	102mm*47mm*30mm
Weight	0.15kg
Working Environment	Indoor
Accessory	User Manual, Warranty Card

## **3. Maintenance and Troubleshooting**

### **3.1 Camera Maintenance**

- 1) Please power off the camera and disconnect the power adapter and socket, if it's not used for a long run.
- 2) Use soft cloth or tissue to clean the camera cover.
- 3) Wipe it with a soft, dry cloth when cleaning the camera lens. Wipe it gently with a mild detergent if needed.  
Do not use strong or corrosive detergents to avoid scratching the lens and affecting the video quality.

### **3.2 Troubleshooting**

#### **1) No video output**

- a. Check whether the camera USB cable is connected, USB port is normal, the power indicator is lit.
- b. Please disconnect the camera with computer and re-connect by USB to check if it works.
- c. Please check whether the video software selects the correct device

#### **2) Image flickering issues**

- a. Check whether the camera USB cable is connected, USB port is normal, the power indicator is lit.
- b. Please disconnect the camera with computer and re-connect by USB to check if it works.