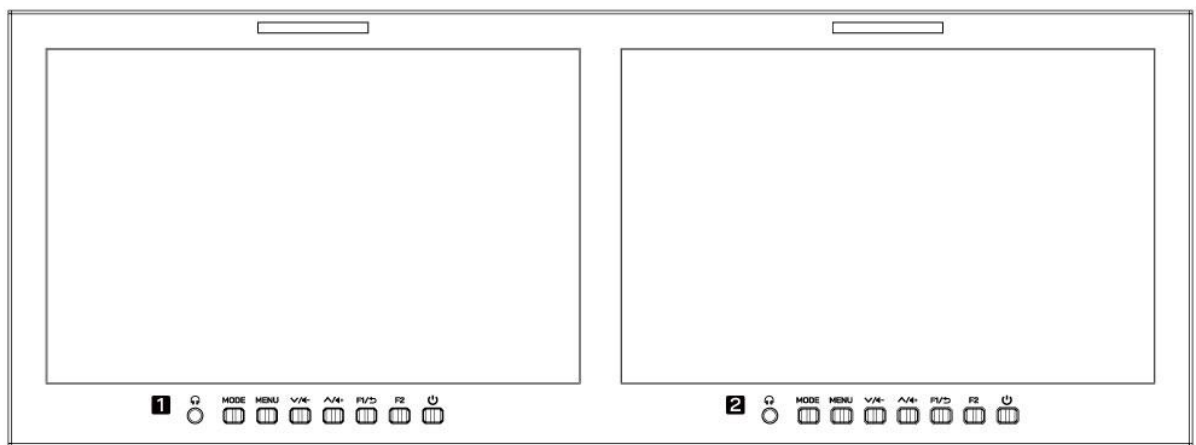


10.1”Dual Rack-mount Monitor



User Manual

Forward

Thank you for purchasing our 10.1-inch dual Rack-mount monitor. Please read this manual carefully before using the unit. Have a great experience!

Cautions

1. Please avoid drop onto the ground and lead to the device broken when move the product.
2. The screen of this product is made of glass, please keep away from injury if the screen is broken.
3. Keep the product away from the heat source. Avoid the prolonged exposures to the sun as the LCD screen will be damaged.
4. To avoid damaging the product, please do not take apart or repair the unit by yourself without the adjustable components in the unit.

- To protect the screen or housing better, please follow these ways as below to avoid the damages:

Please refrain from using the hard objects to hit the screen

Please do not force to wipe the screen or housing

Please do not use the chemical solutions to clean the screen or housing

Please do not spray any detergent on the screen or housing

Please do not write on the screen directly

Please do not stick anything on the screen or housing

Please simply wipe with a clean soft cloth and make sure no water on

the screen or housing

Key Features

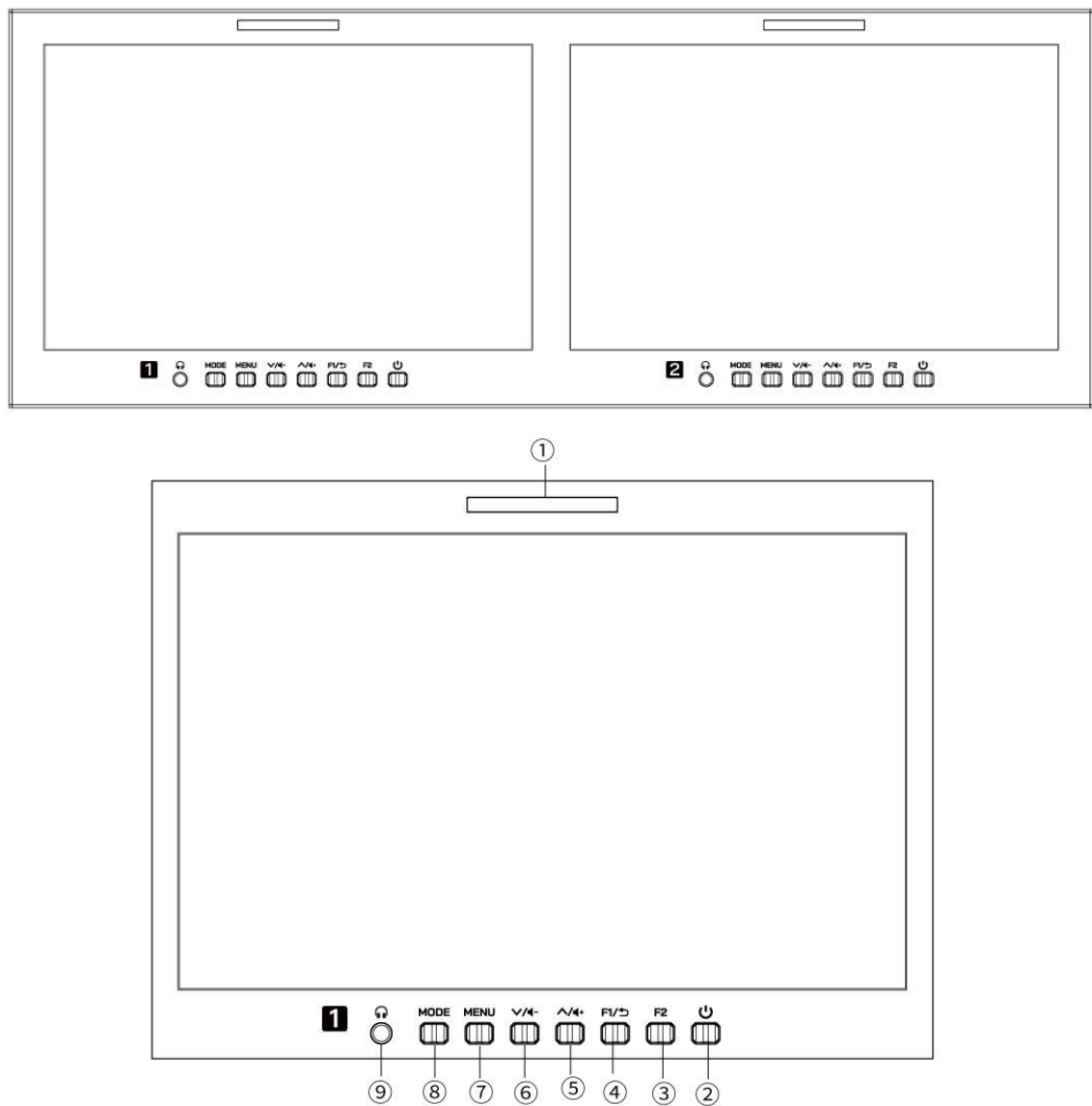
- ◆ Dual 10.1-inch full HD 1920x1200 IPS
- ◆ 4RU rack mount design, suitable for news production, post production, and broadcasting trucks, special vehicles video surveillance and other fields
- ◆ Flexible and intuitive button operation
- ◆ New menu interface, software function iconized
- ◆ Accurate full waveform analysis and monitoring
- ◆ Supports 3D LUT Log to REC.709 and user 3D LUT upload (up to 32)
- ◆ With Vector, Histogram, False Color, Monochrome etc. functions, can help you accurately exposure and focus every shot.
- ◆ Front panel stereo earphone output.
- ◆ Equipped with HDMI, SDI(optional), CVBS inputs and outputs, meet different needs
- ◆ Remote control the monitor menu and functions through Ethernet connection

CONTENTS

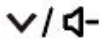

1. Product Description -----	4
1.1 Front Panel Feature -----	4
1.2 Rear Panel Feature -----	5
1.3 Power Input Way -----	7
1.4 TALLY Indicator Connection -----	7
2. Ethernet Connection -----	8
3. Menu Function Introduction -----	13
4. Support Signal Formats -----	18
5. Parameters -----	18
6. Trouble Shooting -----	19

1. Product Description

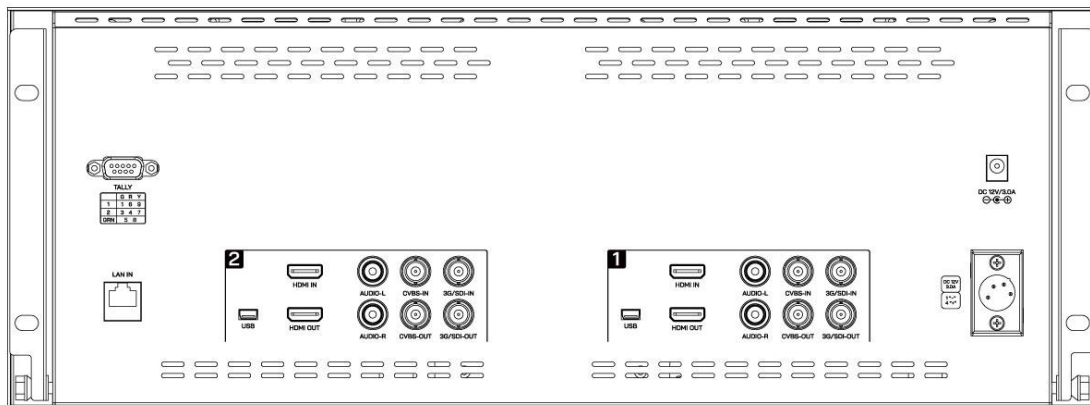
1.1 Front Panel Feature

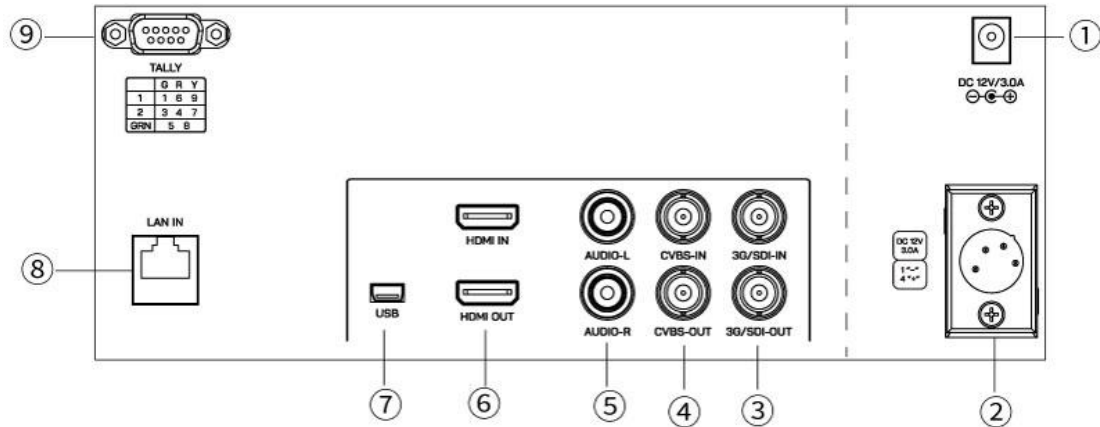


①	/	Tally indicator
②	⏻	Standby power on/off key
③	F2	Custom function shortcut button
④	F1/↵	Custom function shortcut button; Menu return
⑤	^/⏮	Previous item selection/parameters increasing

		<p>after enter the menu;</p> <p>Volume increasing adjustment when menu without display</p>
⑥		<p>Next item selection/parameters decreasing after enter the menu;</p> <p>Volume decrease adjustment when menu without display</p>
⑦	MENU	Main menu , enter/confirm
⑧	MODE	Input signal selection and confirm
⑨		Earphone jack port

1.2 Rear Panel Features





①	/	DC 12V Power Input
②	/	4-pin XLR DC12V power input
③	3G/SDI (optional)	IN (SDI serial data input) OUT(SDI serial data output)
④	CVBS	IN(Composite video broadcast signal input) OUT(Composite video broadcast signal output)
⑤	AUDIO	L(Audio signal left stereo input) R(Audio signal right stereo input)
⑥	HDMI	IN(High definition multimedia interface input) OUT(High definition multimedia interface output)
⑦	USB	Firmware update,LUT file importing port
⑧	LAN IN	Ethernet LAN Connector
⑨	TALLY	TALLY indicator input port

1.3 Power Input Way

There are two ways of power supply to our monitor:

- A. The direct plug-in DC power input port supply. Please use DC5.5*2.1mm DC power plug, power input polarity as shown

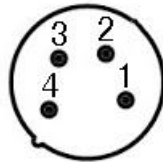


below:

Please use the qualified power supply with output power no less than 24W DC 9-24V.

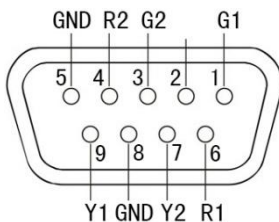
- B. Via 4 pin XLR interface power supply.

Polarity of the 4-pin XLR power input as shown below, please note the polarity of the power input, otherwise it may damage monitor.



Pin number	Signal
1	GND
2	No connection
3	No connection
4	+12V

1.4 TALLY Indicator Connection

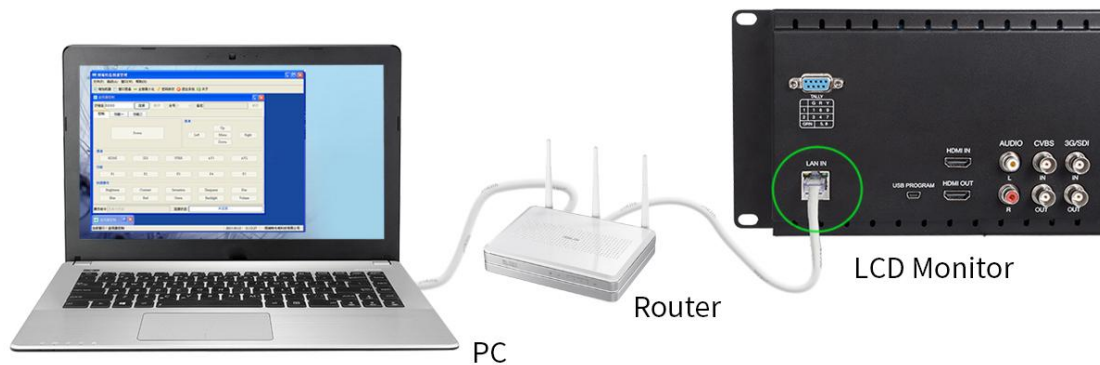


Indicator Color	Pin Connection	
	1 Screen	2 Screen
Green	1-5	3-8
Red	6-5	4-8
Yellow	9-5	7-8

GND port 5 and 8 is sharing

2. Ethernet Connection

Our monitor is equipped with Ethernet interface, and users can connect the PC with our monitor through the Ethernet port. Users can use the software to control the monitor and send their control and command to the specific monitor, as follows:



Connect the LAN port on the back of the monitor to the network. After connection, the monitor will display the same IP address with that device.

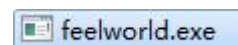
Get the control software: Download from the details page of D101PLUS or D101PLUS-H from website www.feelworld.cn

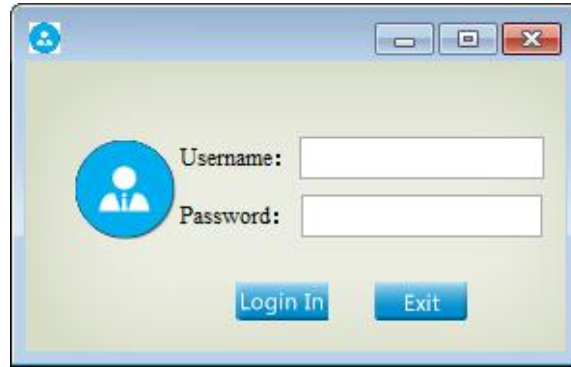


After downloaded open file



, Double Click





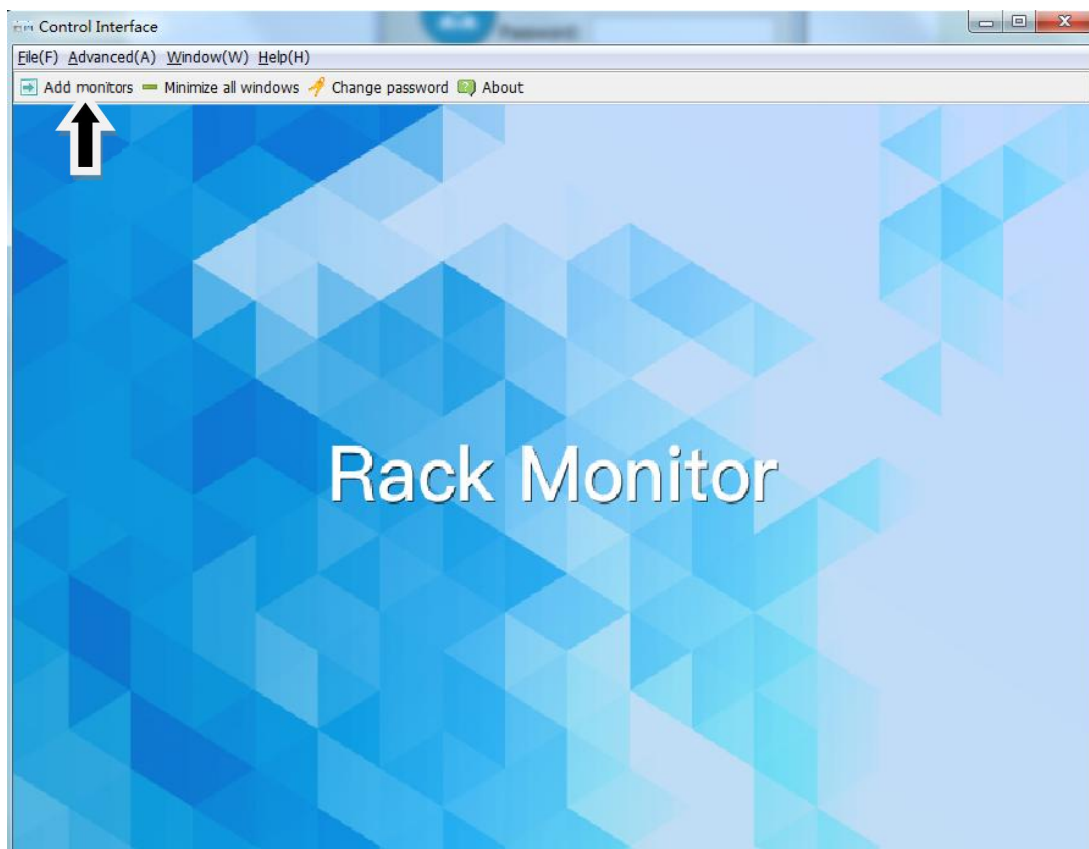
Then, Input:

Username: admin

Password:123456,

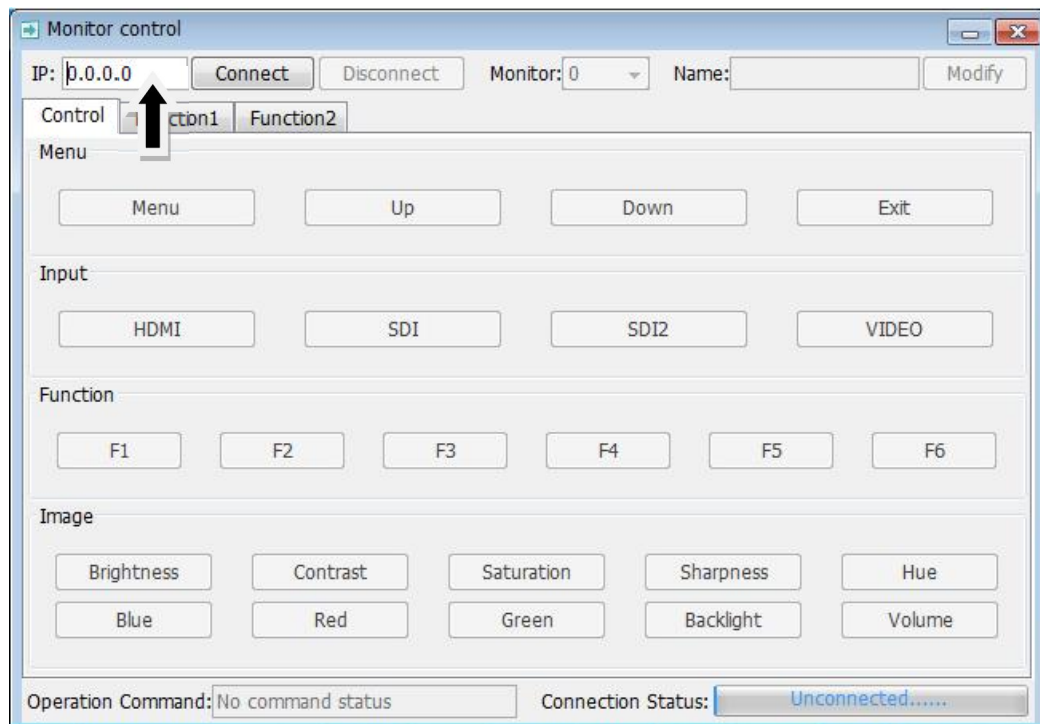
Click Login In

After login in, Click: Add monitor

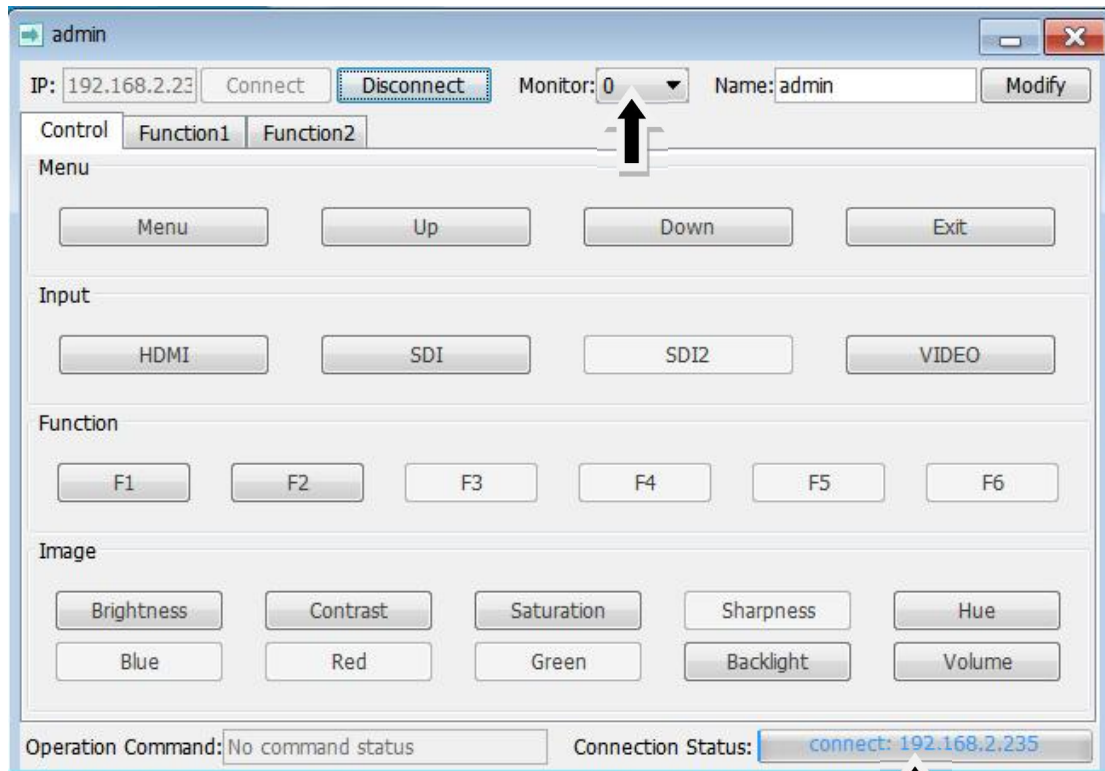


Input IP address (The same as the IP address displayed on the

monitor.)



Select the controlled monitor (number 0 control left monitor,
number 1 control right monitor)



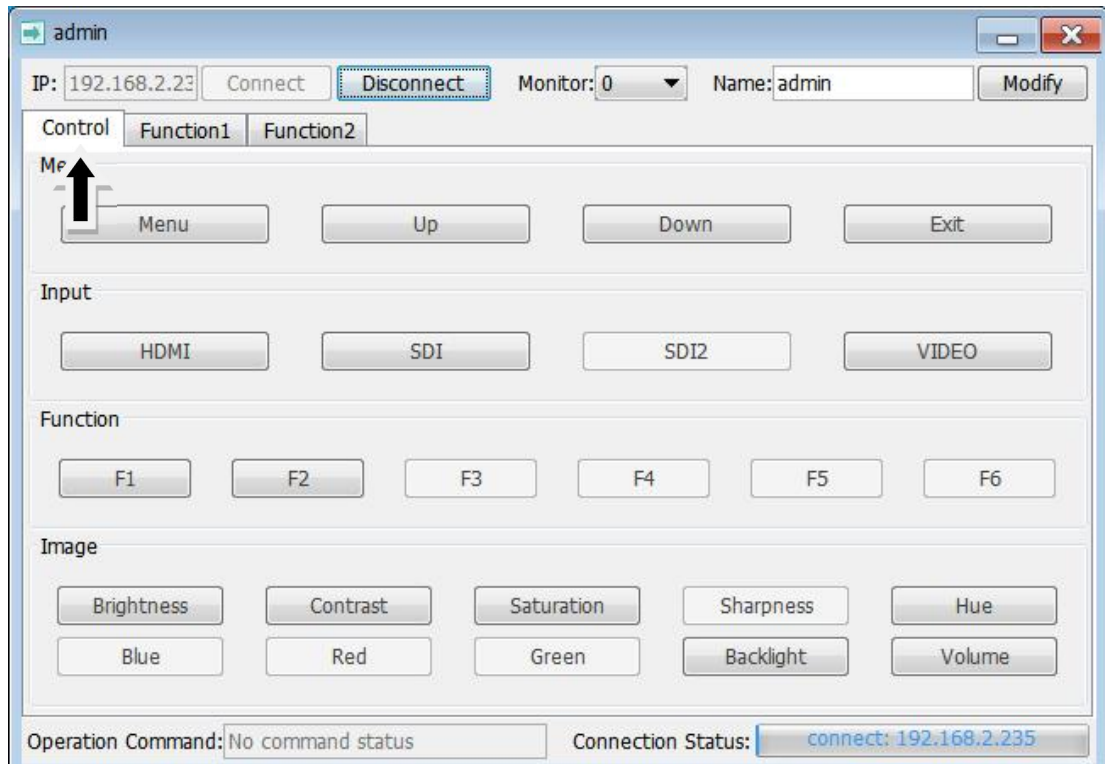
Check: Connection Status,

If connected, the IP address will be displayed. e.g:

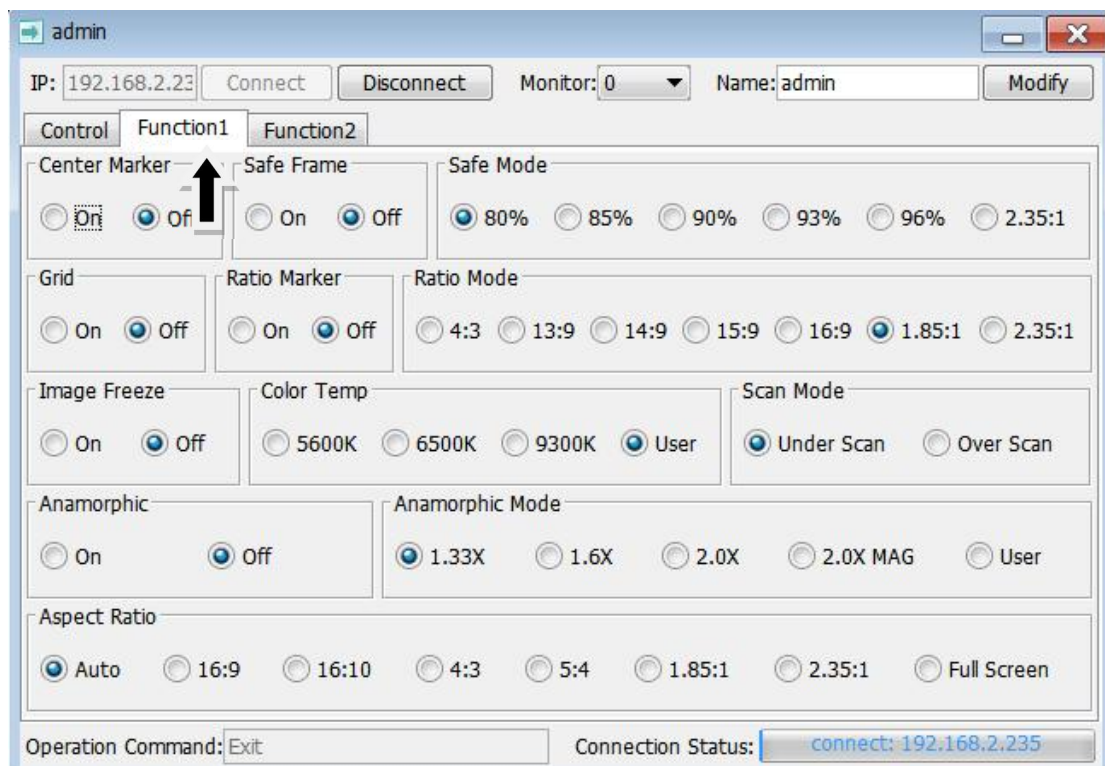
Connection Status: [connect: 192.168.2.235](#)

Then users can click the corresponding control bar to control and command the parameters:

Control:



Function1:













Function2:

3. Menu Function Instruction







Functional Assist

 All Waves	On, Off After turning on, waveform, vector, histogram and embedded audio will be shown.
 Waveform	On, Off Mode : RGB、YUV、Y This essential feature assists with the calibration of professional video cameras. It shows the overall brightness of the image assisting the video professional in correcting

	<p>exposure. The waveform feature also checks the evenness of the lighting when lighting a chromakey or background.</p> <p>Waves Trans. : Off, 25%, 50%, 75%</p>
 Vector	<p>On, Off</p> <p>shows how saturated the image is and where the pixels in the image land on the color spectrum.</p>
 Histogram	<p>On, Off</p> <p>Mode: RGB1、RGB2、Y</p>
 Focus Assist	<p>On, Off</p> <p>Color : (Red, Green, Blue)</p> <p>Peaking Level :you can adjust the peaking level after turning on (1 ~ 10)</p>
 Embedded Audio	<p>On, Off</p> <p>The Audio Level Meters provide numerical indicators and headroom levels. The audio meter is green, and will turn yellow when exceeds -20dB, and turn red when exceeds -9dB.</p>
 Over Exposure	<p>On, Off</p> <p>Exposure Level : you can adjust the exposure level after turning on (10~100)</p>
 Check Field	<p>On, Off</p> <p>Mode : Red, Green, Blue, Mono</p>
 False Colors	<p>On, Off</p>
 Time Code (Only under SDI signal)	<p>On, Off</p> <p>Mode: LTC, VITC</p>










Mark

 Nine Grid	On, Off Color: Red, Green, Blue, Black, White, Gray
 Safe Frames	On, Off Mode: 80%, 85%, 90%, 93%, 96%, 2.35:1 Color: Red, Green, Blue, Black, White, Gray
 Center Marker	On, Off Color : Red, Green, Blue, Black, White, Gray
 Ratio Marker	On, Off Mode: 4:3、13:9、14:9、15:9、16:9、1.85:1、2.35:1 Color: Red, Green, Blue, Black, White, Gray Modified Mark : 0~5






Display



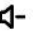

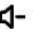

 Scan Mode	Under Scan, Over Scan
 Aspect Ratio	Auto, 16:9, 16:10, 4:3, 5:4, 1.85:1, 2.35:1, Full Screen
 Anamorphic	On, Off Mode: 1.33X, 1.6X, 2.0X, 2.0X MAG, User Under the User , can be customized (1.20X~2.00X)
 Image Flip	On, Off Mode: H Flip, V Flip, H_V Flip
 Zoom Mode	On, Off Mode: 2X、4X、9X、16X、User

	Under the User , can be customized (100%~200%)
 Image Freeze	On, Off
 P2P	On, Off



User


 LUT	<p>On, Off</p> <p>After the LUT Switch is turned on, you can use the Lut (SLOG2, SLOG3, LOGC, VLOG).</p> <p>Lut Import: Confirm</p> <p>After copying the 3D LUT file to the USB flash drive and inserting it into USB adapter cable (USB-female to mini-USB) press MENU button Confirm to import the 3D LUT file.</p> <p>Lut Table</p> <p>Show the 4 built-in Lut and the custom load Lut (up to 32)</p>
 Display Adjustment	<p>Backlight: 0~100</p> <p>Brightness: 0~100</p> <p>Contrast: 0~100</p> <p>Saturation: 0~100</p> <p>Tint: 0~100</p>
 Color Adjustment	<p>Color Temp.: 5600K, 6500K, 9300K, User</p> <p>Under the User, the red, green and blue of the image can be adjusted (0~255)</p>

 Shortcut Key	<p>All Waves, Waveform, Vector, Histogram, Embedded Audio, Center Marker, Safe Frames, Nine Grid, Focus Assist, False Colors, Over Exposure, Anamorphic, Image Freeze, Check Field, Zoom, Image Flip, Aspect Ratio</p> <p>To set the 2 shortcut custom button F1, F2 on the panel</p> <p>e.g.: Press MENU button enter menu ,  /  ,  /  button select User and press MENU to confirm. Then  Shortcut Key and press MENU to confirm, select F1 and confirm to pop-up function items, then select one of them and press to confirm, the cursor will be changed to gray color after confirmed. Same setting for F2</p>
-------------------------------------------------------------------------------------------------------	------------------------------------------------------------------------------------------------------------------------------------------------------------------------------------------------------------------------------------------------------------------------------------------------------------------------------------------------------------------------------------------------------------------------------------------------------------------------------------------------------------------------------------------------------------------------------------------------------------------------------------------------------------------------------------------------------------------------------------------------------------------------------------------------------------------------------------------------------------------------------------------------------------------------------------------------------------------------------------------------------------------------------------------------



System

 Language	<p>English、简体中文、Español、Português、Français、Nederlands、Deutsch、日本語、繁體中文、한국어로、русский язык</p>
 OSD Option	<p>OSD Time: Off, 15Sec, 30Sec, 45Sec</p> <p>OSD Trans: Off, 25%, 50%, 75%</p> <p>No Signal: Red, Green, Blue, Black, White, Gray</p>
 Volume	<p>On, Off</p> <p>0~100</p>
 Reset	<p>Scroll the wheel to select Reset and press Confirm, the system back to original setting.</p>

 Firmware Update	<p>After copying the upgrade file to the USB flash drive and inserting it into USB adapter cable (USB-female to mini-USB), press “MENU” wheel button Confirm to update.</p> <p>After the upgrade, monitor will automatically restart.</p>
----------------------------------------------------------------------------------------------------------	--------------------------------------------------------------------------------------------------------------------------------------------------------------------------------------------------------------------------------------------------

4. Support Signal Formats

Signals	Support signal formats
Video	PAL/NTSC auto recognize
HDMI	<p>480i/576i/480p/576p</p> <p>720p (60/59.94/50/30/29.97/25/24/23.98)</p> <p>1080i (60/59.94/50)</p> <p>1080p (60/59.94/50/30/29.97/25/24/23.98)</p> <p>3840×2160p (60/50/30/29.97/25/24/23.98)</p> <p>4096×2160p (60/50/30/29.97/25/24/23.98)</p>
SDI	<p>720p (60/59.94/50/30/29.97/25/24/23.98)</p> <p>1080i (60/59.94/50)</p> <p>1080p(60/59.94/50/30/29.97/25/24/24sF/23.98/23.98sF)</p>

5. Parameters

Panel Size	10.1" IPS LCD×2
Resolution	1920 × 1200 pixels
Dot Pitch	0.1128(H)×0.1128(V)mm
Aspect Ratio	16:10
Brightness	500 cd/m ²
Contrast	1500:1

Viewing Angle	80°/80°(L/R) 80°/80°(U/D)
Backlight	LED
Input Voltage	DC 9~24V
Input Signal	3G-SDI (optional), HDMI, Video, Audio(L/R)
Output Signal	3G-SDI (optional), HDMI, Video, Stereo Headphone
Power Consumption	≤ 24 W
Special Function	TALLY indicator
Working Temperature	- 10~60℃
Storage Temperature	- 30~70℃
Unit Size	482x177x25 mm
Unit Weight	≈2048g


6. Trouble Shooting

If there is any problem when using the unit, please try following ways to inspect and solve. Please contact us if you still can not solve it or have other problems.

● Without image display

Trouble shooting

◆ Video cable off or connect incorrectly	Check the quality of the cable, make sure the correct input interface
◆ Without video signal input	Check the signal source and output interface connect is correct or not

◆ Monitor is not be powered on	Check whether the power is connected, click “  ” button to confirm.
◆ Supply voltage instability	The power adapter plug is poor connected with the socket
◆ self-contained power supply, polarity connect inversely	Reference "Power Input Way" and reconnect

◆ Image/color display abnormal Trouble shooting

◆ Video cable poor contact	Change the video cable, try again
◆ Video signal interfered by external environment	Move to another environment to try again
◆ Video input signal amplitude too low	Check signal source video output, or change signal source and have a try.
◆ Menu color saturation adjustment closing	Enter menu to check color, or reset to factory settings
◆ Check Field set in mono or black & white	Reset Check Field, back to the color
◆ Image deformation	Reset the image ratio

◆ Earphone without sound Trouble shooting

◆ Audio cable off or connection properly	Confirm connected with the corresponding input port
◆ Volume adjustment was closed	Reset the volume control and adjust to a proper position.
◆ HDMI cable poor Connected	Check the quality of cable, or change cable and have a try
◆ No sound after switch video signal	Check whether there is an AUDIO signal input in AV Mode.

■ **Remark:**

★If there are still other problems, please contact with our related technical persons.

★If there are changes without prior notice.